

LV JUICE

TNERIB

TRANSNET EARTH ROD INSPECTION BOX



PICTURED WITH TNSLGR3 & TNEARTHAG

TransNet's TNERIB is a custom-designed inspection box featuring a hinged latching lid for easy access. Strengthened for longevity, the TNERIB protects the integrity of the connection and is easily installed in footpaths.

FEATURES

- Heavy duty strengthened, hinged & latched lid
- Made from UV stabilised material
- Square to easily fit into paving work
- Easy to identify with embossed lid detail
- Extensive rain water access
- Custom designed and manufactured in NZ

NEW ZEALAND MADE

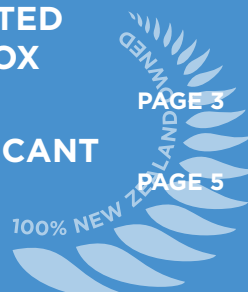


This Month

SPARTAN BULKHEADS FOR HAZARDOUS AREAS
PAGE 2

CCG FIRE RATED JUNCTION BOX
PAGE 3

REELX LUBRICANT
PAGE 5



FREE BAG OF FRUIT JUBES
WHILE STOCKS LAST



When you spend over \$300 (excl GST) on one invoice this month

www.transnet.co.nz

SPARTAN BULKHEAD ZONE 1 & 2 HAZARDOUS AREA



Compact

SPARTAN Bulkhead has a compact, low profile design for restricted space applications. It also allows easy access to the back of the unit with rear cable entries, so cabling can be hidden and protected from damage.

Robust

Housed in marine grade aluminium with stainless steel fasteners and brackets, SPARTAN Bulkhead is IP66 and IP67 rated and can survive in the most extreme environments.

LED Friendly

SPARTAN Bulkhead uses CoolExtrude™ thermal management technology, ensuring a much cooler LED operating temperature. This provides up to 60% better heat dissipation compared to traditional lighting solutions and allows the product to operate for 10+ years in the most challenging environments.

Intelligent Emergency Back-Up

SPARTAN Bulkhead is available as an emergency variant, and standard variants can be converted to an emergency fitting at any time on-site, using an additional battery back-up module which can run up to 100% light output under emergency conditions. All SPARTAN Bulkhead emergency units come with intelligent battery management to proactively monitor and maintain the overall health of your luminaire.

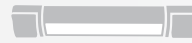
Wide Operating Temperature

An operating temperature range of -50°C to +46°C* with a T4/T5 rating means SPARTAN Bulkhead is suitable for even the most challenging conditions.

* Emergency variants have an operating temperature of -20°C to +46°C



FLOOD



LINEAR



BULKHEAD



BAY

The SPARTAN Bulkhead range is designed for hazardous area environments which require high performance, reliable, White-Light illumination. Using Raytec's field-proven, long-life LED technology, BL24 bulkhead luminaires are globally certified for all Zone 1 & Zone 2 applications. Their compact, low profile design is ideal for restricted space applications, and also allows easy access to the back of the unit with rear cable entries to hide and protect cables from damage.

Features

- ATEX and IEC Ex approved - Zone 1 and Zone 2
- Ultra Long Life LED
- High Lumen Output LED
- Compact, Low Profile Design
- Easy Installation and Maintenance
- Zone 1, 2, & Emergency Variants
- Wide Operating Temp -50° to +55°
- VARIO Lens Technology - easy modification of beam patterns
- 5 Year Warranty
- UK Designed and Manufactured



SPX-BL24-W-xxx*

Zone 1/21



SPX-BL24-W-xxx-EMX25*

Zone 1/21 Emergency



SPZ-BL24-xxx*

Zone 2/22



SPX-BKT-EE1

Emergency Exit Sign

*Use suffix for beam angle:
Circular 1010, 3030, 5050, 120120,
Elliptical 3510, 6025, 8030, 12050

Specifications

Certification: ATEX and IEC Ex rated for Zone 1 and 2 Gas and Dust, and UL/CSA inc. C1D2

Angles: 10x10° / 35x10° / 60x25° / 80x30° / 120x50° elliptical and 30°, 50° and 120° circular options

Mains Voltage: 110-254V AC 50/60 Hz

Low Voltage Option 18-48V AC/ 18-69V DC
Extra Low Voltage Option 12V AC/DC

Beam Shape: Elliptical or Circular

Beam Angle System: VARIO interchangeable lens system (elliptical) / Fixed (circular)

Consumption: 34W

LED Type: PLATINUM Elite SMT LEDs

Number of LEDs: 24

Power Output: Up to 2,500lm/2,750lm

Wavelength: White-Light (6,000K+)

IP Rating: IP66 and IP67

rayTEC[®]

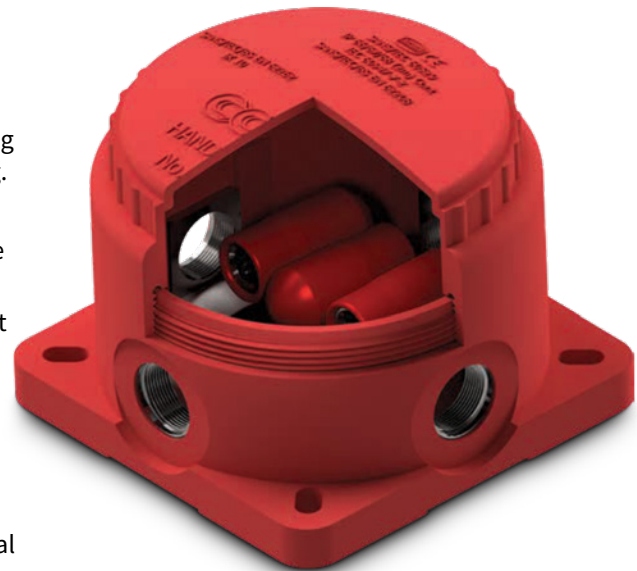


HANDI FIT FIRE RATED JUNCTION BOX

IP66/68, 950°C, 3 HOURS – FOR EMERGENCY CIRCUITS

FEATURES

- Handi-Fit™ Fire Rated Box for emergency circuits (950°C for 3-hours)
- Screw-on lid provides ease of installation. Lid locking with a special key prevents unauthorised tampering.
- Supplied complete with safety securing lid lanyard.
- Raised domed lid facilitates connections to be made outside of the box
- Only approved CCG cable glands and terminals must be used
- No exposed metal parts
- Dust & waterproof to IP66/68 when used with CCG sealed cable glands
- No drilling or tapping of cable entries required
- Mounting studs provided for DIN rail if using Terminal Blocks
- Internal earthing to all entries and rail provided



TECHNICAL DATA

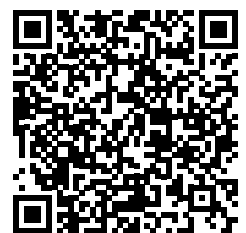
Type	Handi Fit™ 4-Way Fire Rated Junction Box Handi Fit™ Y Fire Rated Junction Box Handi Fit™ H Fire Rated Junction Box
Box Material	Impact, corrosion and UV resistant glass reinforced polyester compound
Optional Accessories	Ceramic Terminals, Insulated Connectors, PTFE Washers, Box Spanner (Lid Locking Key). 4-Blanking plugs are provided



STANDARDS AND CERTIFICATIONS

Continuous Temperature Rating	60°C to +160°C (Unfinished)
Continuous Current Rating	32A - 192A
Impact	7-Joules
Fire Rated	BS 6387 - 950°C - 3 Hours

<u>Conformance</u>	<u>Standard</u>	<u>Certificate</u>
IEC/BS/EN	62208:2011	CML 17Y11251
SANS	62208:2012	MASC 16-1787
Impact Protection IK10	IEC/BS/EN 60529 SANS 60529	CML 17Y11251 MASC 16-1787
Deluge Protection	DTS 01	CML 14CA370-1
Marine ABS	IEC 60529	ABS 14SG1277927-PDA
Approvals DNV-GL	IEC 60529	DNV-GL AE0000011
Short Circuit Protection	IEC 60947-7-2, IEC 62444	CATAPULT OR/15/11677_2
Continuous Circuit Protection	IEC 60947-7-2	CATAPULT OR/15/11677_2
UV Protection	ISO 4892-2	
Zero Halogen	BS7211, BS 50267-2-1	TDW69-09-14
Flammability	UL94V-0	
London Underground Approval	IEC 62208, IEC 62262	LU 3057



View the latest CCG catalogue on our website

www.transnet.co.nz/Catalogues





MD 106 | MD 116

NON-CONTACT VOLTAGE DETECTORS

The MD106 and MD116 are easy-to-operate non-contact voltage testers that are essential tools for both home hobbyists and professionals. They are available with optical, acoustical, and vibrating indicator options, and feature a pocket clip for portability. The MD106 and MD116 can detect live voltage wires in splices, cable plugs, cable drums, sockets, switches and junction boxes. These voltage detectors use a capacitive measuring process – in contrast to inductive measurements, no flow of current is required.

FEATURES

- Cat IV/1000V overvoltage protection
- IP65 rating
- Lightweight and portable
- Easy to operate

STANDARDS

- IEC60529
- IEC/EN61010
- IEC/EN61140
- IEC/EN61326-1

APPLICATIONS

- General purpose detection
- Low level electrical testing
- Hobby work

KIT CONTENTS

- Non-contact voltage detector MD106 or MD116
- 1.5V AAA batteries x2
- Instruction manual
- Warranty

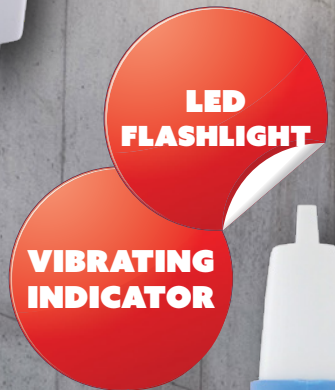
Technical Data		
FUNCTION	MD106	MD116
DISPLAY	OPTICAL, ACOUSTICAL	OPTICAL, ACOUSTICAL, VIBRATING
MEASUREMENT RANGE	90-1000V AC	12-1000V AC
FREQUENCY RANGE	50 - 60HZ	40-400HZ
TEMPERATURE RANGE	-10°C TO +50°C, <75% RELATIVE HUMIDITY	0°C TO +40°C, <80% RELATIVE HUMIDITY
CURRENT CONSUMPTION	80MA	
DUTY CYCLE	CONTINUOUS	
POWER SUPPLY	2 X 1.5V LR03 BATTERIES (TYPE AAA)	
OVERVOLTAGE CATEGORY	CAT IV/1000V	
DEGREE OF PROTECTION	IP65	
DIMENSIONS	155 X 25 X 23MM	
WEIGHT	APPROX. 56G	APPROX. 58G



MD 106

MEASURING FUNCTIONS

- Non-contact voltage detection from 90 V AC.
- Optical and acoustical indication in case of power
- 90 V – 1000 V AC measurement range
- Self-test button for verification of operation



MD 116

MEASURING FUNCTIONS

- Non-contact voltage detection from 12 V AC
- Optical, acoustical, and vibrating indication in case of power
- 12 V – 1000 V AC measurement range
- Automatic self-test





From The Makers of CorrosionX

REELX[®]

Ultimate Fishing Reel Lubricant

ReelX stops and prevents wear, corrosion and rust the moment it is applied. No waiting, no curing time. It never dries or evaporates.

Why use ReelX?

- Displaces moisture permanently. It contains no wax, tar, silicone or other solids. It does NOT gum up!
- It outperforms all other reel lubricants sporting a lubrication factor of 0,31 (Standard engine oil is 1,2)
- ReelX can be applied over wet and already corroded metal surfaces and also electronics
- Vastly improves reel performance, bearing life and reliability
- Will not harm monofilament, circuit boards, rubber, neoprene, any plastics, glass or fibreglass
- Unlimited shelf life
- Non flammable
- Stops and prevents rust and corrosion the moment it is applied
- Stops electrolysis long term with guaranteed dielectric strength of 30,000 volts
- Super fast penetrant for the disassembly of parts during service
- Pure Product. No thinners. So you can apply ReelX REALLY sparingly!
- Easy on the reels, easy on the wallet. Tough on corrosion!

If your gear is Mission Critical.... ReelX!

Cat No.	Description
REELX	CORROSION X REEL LUBRICANT 1OZ





ENVIRONMENTALLY SEALED HEATSHRINKABLE CRIMP CONNECTORS

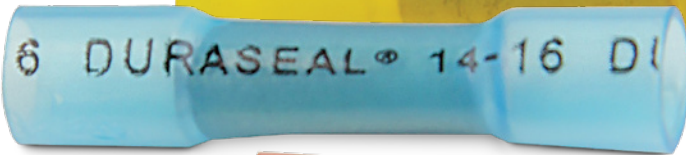
DURASEAL

ENVIRONMENTALLY SEALED HEATSHRINKABLE
| CRIMP CONNECTORS |

D4060003
3-6mm²



D4060002
1.2-2.5mm²



D4060001
0.38-0.95mm²



FEATURES

- Crimp link inside sealant-lined heatshrink sleeve
- Adhesive lining enhances protective qualities
- Completely environmentally sealed - protects from water, condensation, salt, and corrosion
- Provides strain relief
- Protects against vibration
- Fully insulates connection
- UL, CUL and Lloyds listed

APPLICATIONS

- Automotive/truck wiring, repair, maintenance & accessory installations
- OEM automotive/truck wire harness fabrication
- Commercial wiring (pumps/pools/spas)
- Marine electronics
- Fleet maintenance
- Appliances



Sold in packs of 20

Raychem
from TE Connectivity



RAYGEL PLUS JOINT KITS

Raychem RayGel Plus Joint Kits offer quick, easy reliable sealed joints for low voltage applications. Enclosures offer a state-of-the-art sealed joint for underground, direct-buried and overhead applications.

RAYGEL PLUS SYSTEM

- Housing is made of Halogen free UV resistant Polypropylene
- RayGel PowerGel Sealant
- Some kits include connector blocks or connectors

WIDE APPLICATION AREA

- Street, garden and pool lighting
- Connection of outdoor equipment
- Frost protection systems
- Cable trays and cable ducts
- With Raychem GelBox 25 joints up to 5x25mm or 4x35mm²
- For single-core cables from 10-50mm² & multi-core cables from 2x1.5 up to 5x16mm²

SOPHISTICATED ENCLOSURE DESIGN

- Optimised joint design with integrated strain relief and more space for the connection
- Flexible wave-like gel barriers (no tools required)

UNIVERSAL CONNECTOR BLOCK

- Full range of branching capabilities without cutting of main cables
- Supplementary tool for insertion of sliding nuts
- Unique latchable connector block for even more effective and easy installation



POWERGEL SEALANT FILLED

- Covers and seals every connection quickly and easily, saving time and effort
- Rated to 90°C continuous temperature
- Environmentally friendly



Raychem
from TE Connectivity



#102 TERMINAL CRIMPER

A must-have tool for every tradesman, this ratchet type tool for pre-insulated and supergrip terminals ensures a complete crimp every time.

FEATURES

- Range: 0.5mm² - 5.5mm² (Red, Blue & Yellow pre-insulated)
- Crimp Type: Oval on conductor, diamond on insulation
- Length: 230mm
- Weight: 550g



Product #102/1

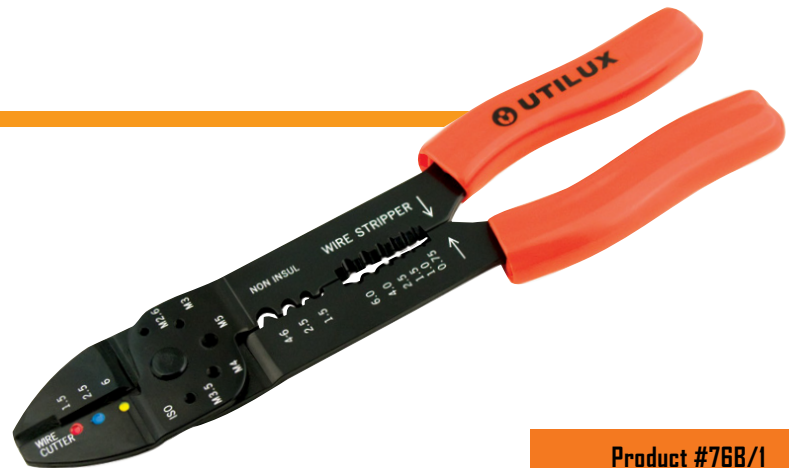
\$89.00
+ GST

#76B/1 COMBINATION TOOL

Non-ratchet pliers for pre-insulated and un-insulated terminals. Includes wire cutting and stripping positions.

FEATURES

- Range: 0.5mm² - 4.0mm²
- Crimp Type: Pre-insulated, oval uninsulated, indent
- Length: 203mm
- Weight: 250g



Product #76B/1

\$19.00
+ GST

#112/1 BOOTLACE CRIMP TOOL

Low cost tool with a huge crimp range for bootlace ferrules. Ratchet control for crimp consistency, the ratchet is adjustable to compensate for tool wear.

FEATURES

- Range: 0.5mm² - 10.0mm²
- Length: 203mm
- Weight: 400g



Product #112/1

\$89.00
+ GST



ARE YOU COMPLIANT?

AS/NZS 4836:2011 Products



TransNet New Zealand Ltd

Auckland

78 Cryers Road
East Tamaki
Auckland
NEW ZEALAND
Ph 0800 442 182
Fax 0800 442 183
PO Box 39 383
Howick, Auckland

Wellington

10 Petone Ave
Petone
Wellington
NEW ZEALAND
Ph 04 576 2530
Fax 04 576 0040
PO Box 39 383
Howick, Auckland

NEW ZEALAND

sales@transnet.co.nz

TransNet Tonga

Ma'ufanga

Small Industries
Ma'ufanga
TONGA
Ph +67 627 939
Fax +67 627 976
PO Box 2932
Nuku'alofa

TONGA

transnet@kalianet.to

IF YOU REQUIRE

INSULATING GLOVES • PROTECTIVE CLOTHING • EYE PROTECTION • FOOTWEAR • HEIGHT SAFETY • HEARING PROTECTION • SAFETY HELMETS • RESPIRATORY PROTECTION • FLAME RESISTANT GLOVES • ARC FLASH PROTECTION

WE SUPPLY

MARIGOLD • ARC ARMOUR • XSPEX • BISON • MILLAR • VORTEX & E-MAXX • NEXUS • BREATHE EASY • EUREKA • OEL AND MORE!

Get your copy of the
TransNet Safety Catalogue

To view our complete range of safety products and ensure your gear is AS/NZS 4836:2011 compliant please contact your local rep or view online at www.transnet.co.nz/catalogues



WE OFFER **FREE** TESTING OF NEW TRANSNET PRODUCTS

GLOVES • MATS • BLANKETS • BOOTS

Talk to your local rep or contact customer services today for more information.

TransNet NZ Ltd has made every reasonable effort to ensure the accuracy of this information and it is to the best of our knowledge correct and reliable. Under no circumstances does this constitute an assurance of any particular quality or performance and users should independently evaluate the suitability of products for their desired application. All information in this publication including pricing, drawings, illustrations, images and graphic designs are reflections of our current understanding. TransNet NZ Ltd reserves the right to make any adjustment to this information at any time. Our liability for the products outlined in this publication is set forth in our standard terms and conditions of trade. In case of any potential ambiguities or questions, please contact us for clarification.

